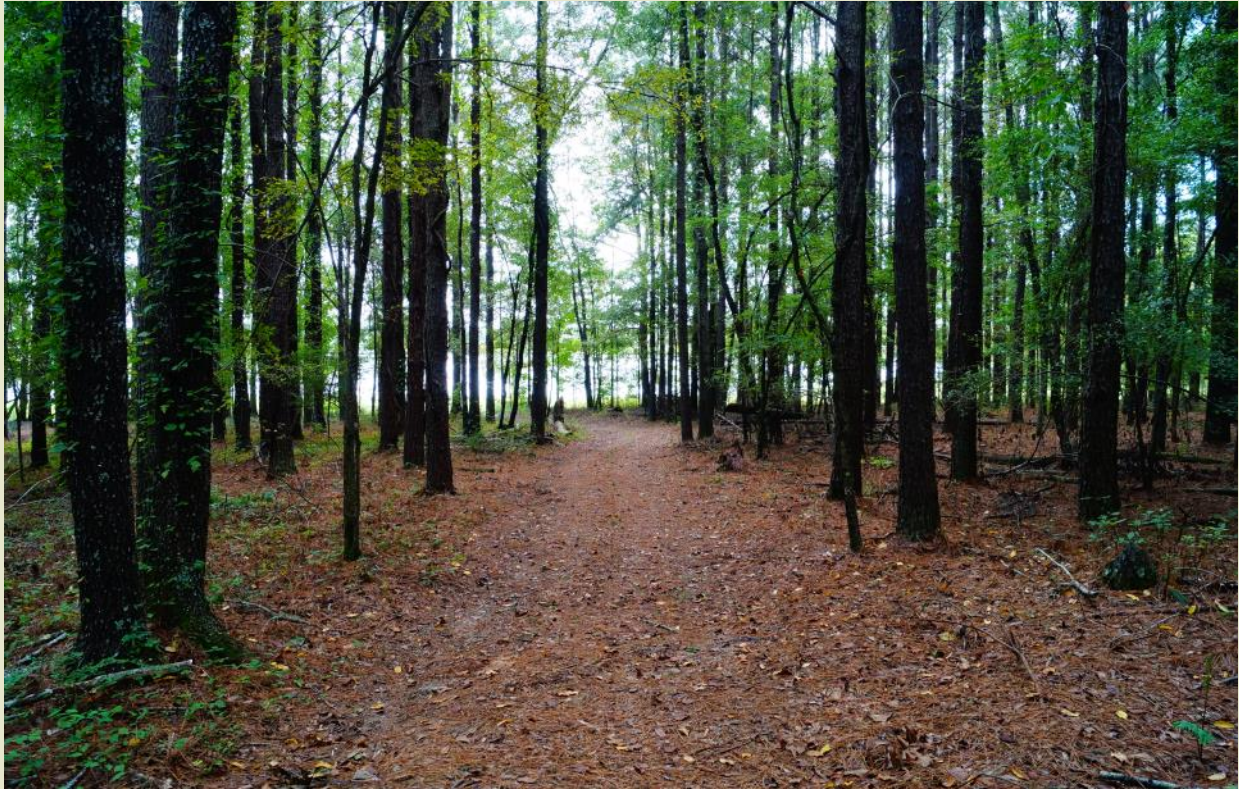




**Sartain's Heritage**  
Properties, LLC.  
www.SartainsHeritage.com

# Charlton Place Lot 6 5.09 Acres +/- Madison County, MS



**CONTACT:  
SARTAIN'S  
HERITAGE  
PROPERTIES  
601-856-2720**

Sartain's Heritage Properties  
106 First Choice Drive  
Madison, MS 39110  
Phone: 601-856-2720  
Fax: 601-853-6765  
www.SartainsHeritage.com



Welcome to Charlton Place, the premier master planned community located on Hwy 22 in Madison County. Its minutes away from the City of Madison and the Town of Livingston. Lot 6 is a beautiful waterfront location perfect to build your estate home.

Contact Sartain's Heritage Properties at 601-856-2720

**Priced at \$225,000**





All information contained herein is supplied by sources deemed reliable, but is not guaranteed by Sartain's Heritage Properties, its Brokers or Agents. Properties are subject to errors, omissions, correction, price change, prior sale or withdrawal without notice.