



Sartain's Heritage
Properties, LLC.
www.SartainsHeritage.com

CR 2132 84 Acres +/- Attala County, MS



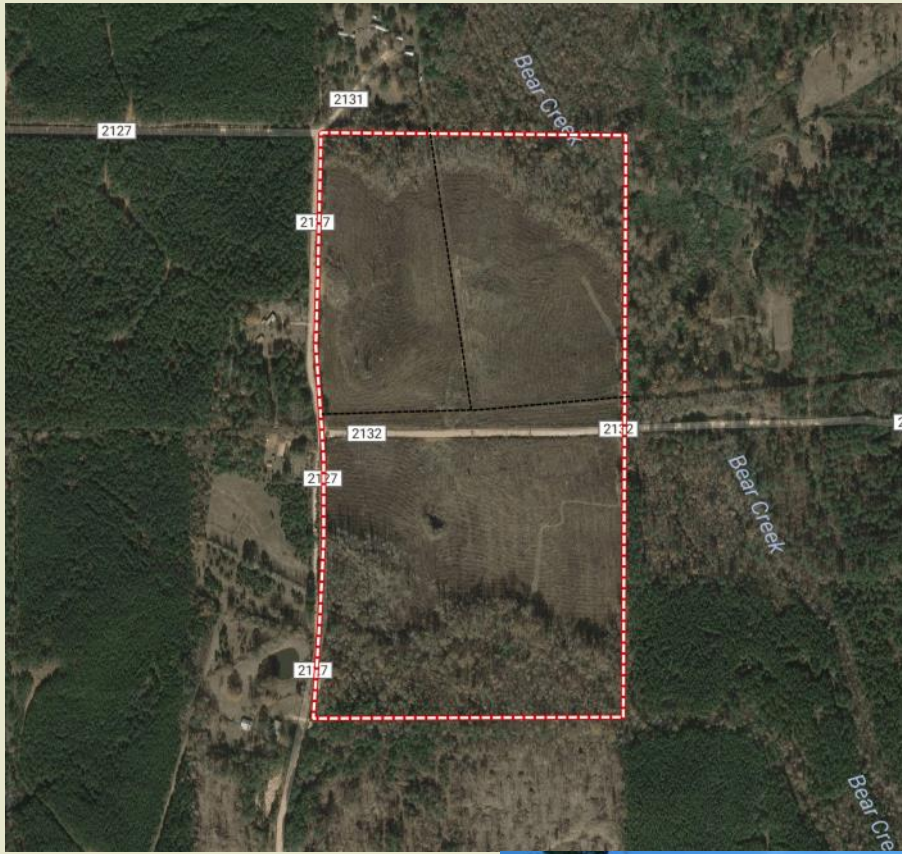
CONTACT:
J. PARKER SARTAIN
601.506.2398
psartain@sartainsheritage.com

Sartain's Heritage Properties
106 First Choice Drive
Madison, MS 39110
Phone: 601-856-2720
Fax: 601-853-6765
www.SartainsHeritage.com



83.78 acres located in Sections 15 and 22, T16N, R9E, Attala County, MS. the property has frontage on CR 2127 with utilities available. CR 2132 divides the tract into two 40 acre parcels. The timber consists of 54 acres of 3-year-old replanted pines and 29 acres of hardwood Streamside Management Zones. Surrounded by other timberland the rolling hills to bottomland terrain make it an excellent choice for a recreational hunting property in north-east Attala County.

\$125,586.00



All information contained herein is supplied by sources deemed reliable, but is not guaranteed by Sartain's Heritage Properties, its Brokers or Agents. Properties are subject to errors, omissions, correction, price change, prior sale or withdrawal without notice.