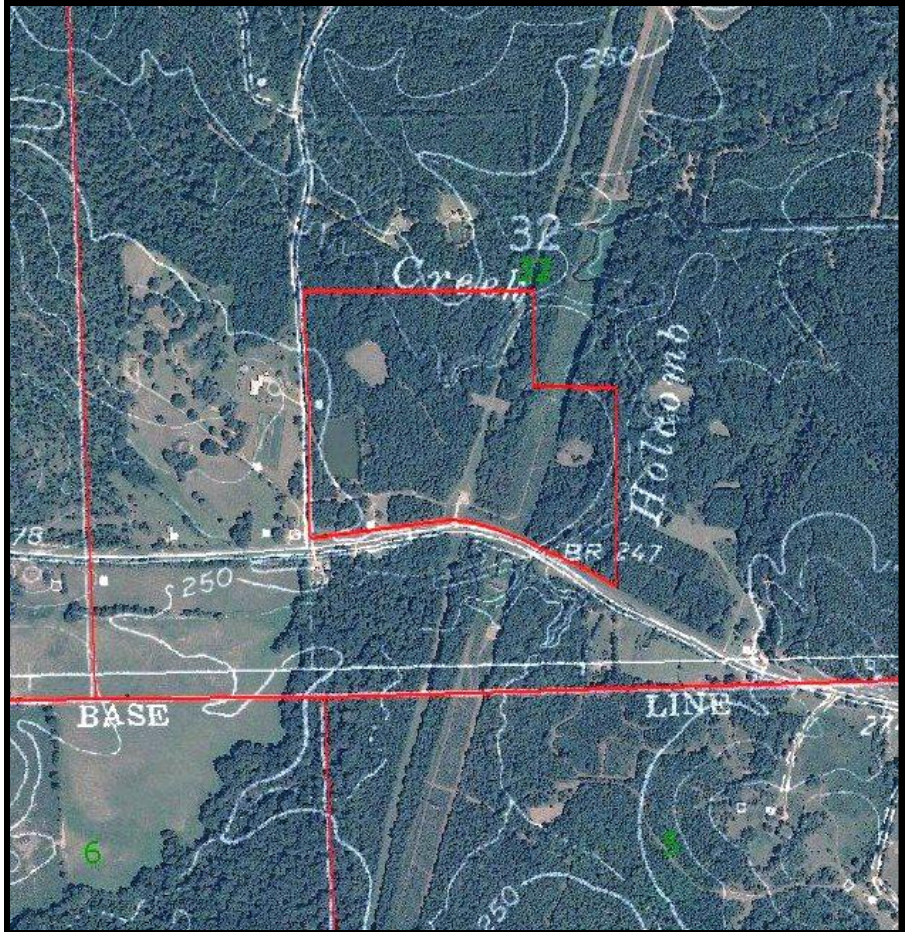




**Sartain's Heritage**  
Properties, LLC.  
www.sartainsheritage.com

# Old Port Gibson Road

52.6 Acres +/-  
Copiah County, MS



52.60 surveyed acres on Old Port Gibson Road in Copiah County. The property is located approximately 9 miles west of I- 55 Exit 61 at Hazlehurst. Approximately 10 acres of 15 year plantation pine with the balance in hardwoods.  
1280 sq. ft furnished mobile home included in the sale.  
2 +/- acre pond stocked with Bass, Bream and White Perch.  
12 x 16 guest house with kitchen overlooking the pond.  
Food plots and stands in place, power line and pipeline across the property can be utilized as additional food plots.

This is a great small hunting and weekend property in an area known for excellent deer and turkey hunting.

**\$248,000.00**

**CONTACT:**  
**J. PARKER SARTAIN**  
601.506.2398  
psartain@sartainsheritage.com

**Sartain's Heritage Properties**  
106 First Choice Drive  
Madison, MS 39110  
601.856.2720  
Fax: 601.853.6765  
www.SartainsHeritage.com

